

State of Wyoming Corner Record

(In compliance with the **CORNER PERPETUATION AND FILING ACT**, Wyoming Statutes, 1997 Section 33-29-140 et. seq., and the Rules and Regulations of the Board of Professional Engineers and Professional Land Surveyors)

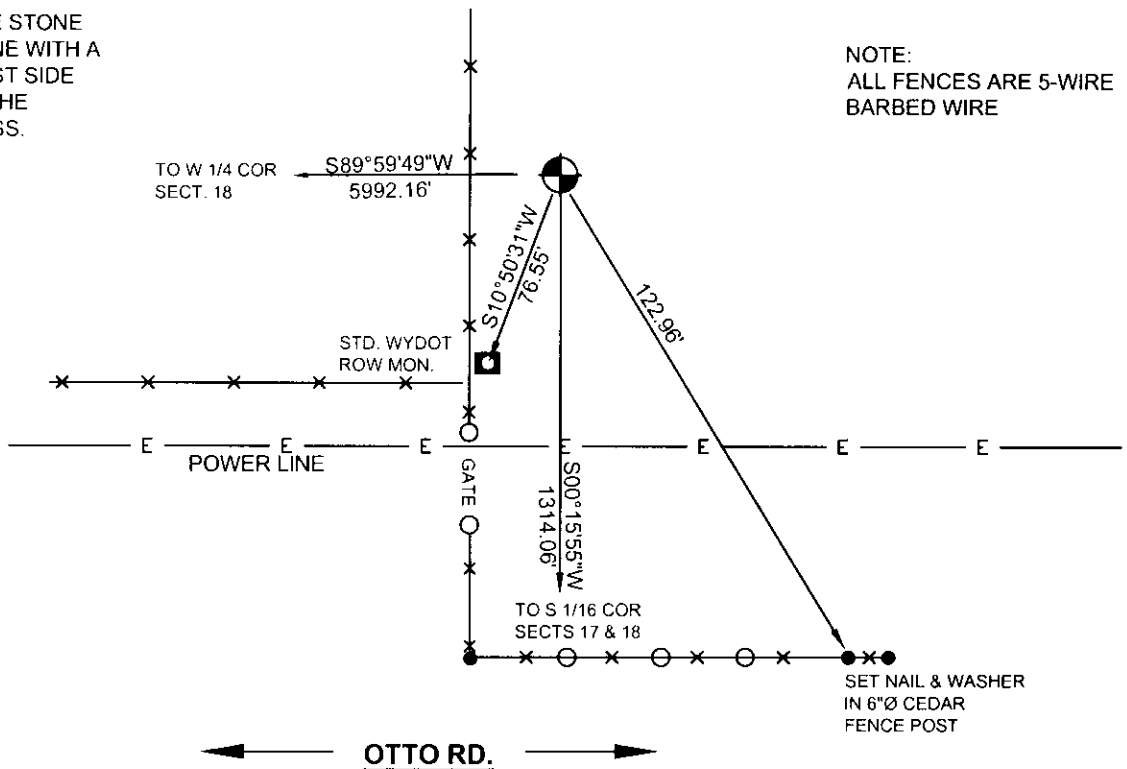
Reverse side of this form may be used if more space is needed.

Record of original survey and citation of source of historical information (if corner is lost or obliterated). Description of corner monumentation evidence found and/or monument and accessories established to perpetuate the location of this corner. Sketch of relative location of monument, accessories, and reference points with course and distance to adjacent corner(s) (if determined in this survey). Method and rationale for reestablishment of lost or obliterated corner.

G.L.O. RECORD:
 VARIATION 15°45'E
 "FROM THE CORNER TO SECTIONS
 17, 18, 19 & 20 I RUN NORTH
 BETWEEN SECTIONS 17 & 18 40.00
 CHAINS AND SET A GRANITE
 BOULDER 18"X10"X6" FOR 1/4
 SECTION CORNER".



AT THE CORNER:
 FOUND A 6"X10" GRANITE STONE
 UP 9" IN MOUND OF STONE WITH A
 "1/4" CARVED IN THE WEST SIDE
 WITH A T-POST SET ON THE
 NORTH SIDE FOR WITNESS.
 SET NOTHING.



NOTE:
 ALL FENCES ARE 5-WIRE
 BARBED WIRE

Date of Field Work: 09/24/09

Office Reference: MCCALL

Cross Index Plat

	1	2	3	4	5	6	7	8	9	10	11	12	13	14	15	16	17	18	19	20	21	22	23	24	25		
A																											A
B																											B
C		6	5	4	3	2	1																			C	
D																										D	
E																										E	
F																										F	
G																										G	
H																										H	
J																										J	
K																										K	
L																										L	
M																										M	
N																										N	
O																										O	
P																										P	
Q																										Q	
R																										R	
S																										S	
T																										T	
U																										U	
V																										V	
W																										W	
X																										X	
Y																										Y	
Z																										Z	

Firm/Agency, Address

Western R&D, Ltd.
 5809 Yellowstone Rd, Suite B
 Cheyenne, Wyoming 82009

This corner record was prepared
 by me or under my direction
 and supervision.

SEAL & SIGNATURE

Telephone Number: (307) 632-5656

● Denotes Monument Found



Corner Name EAST 1/4 CORNER Section 18, T 13 N, R 68 W, 6th P.M.

Cross-Index No.: L-5

County: LARAMIE Wyoming

SBRPEPLS/PLSW: March 1994; PLSW January 1998

